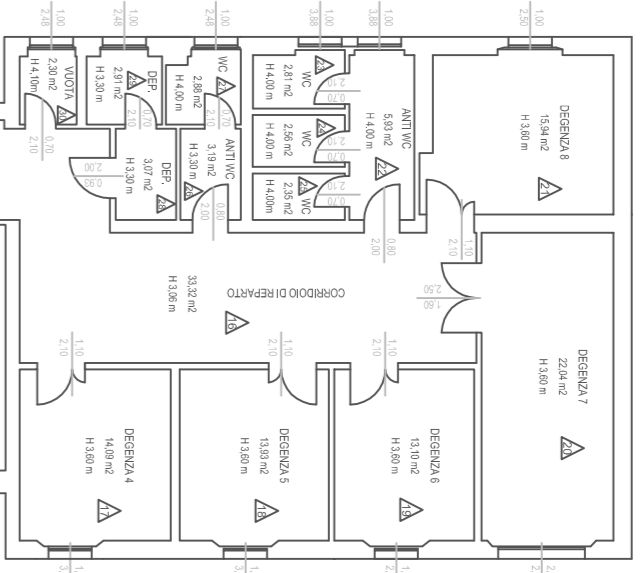
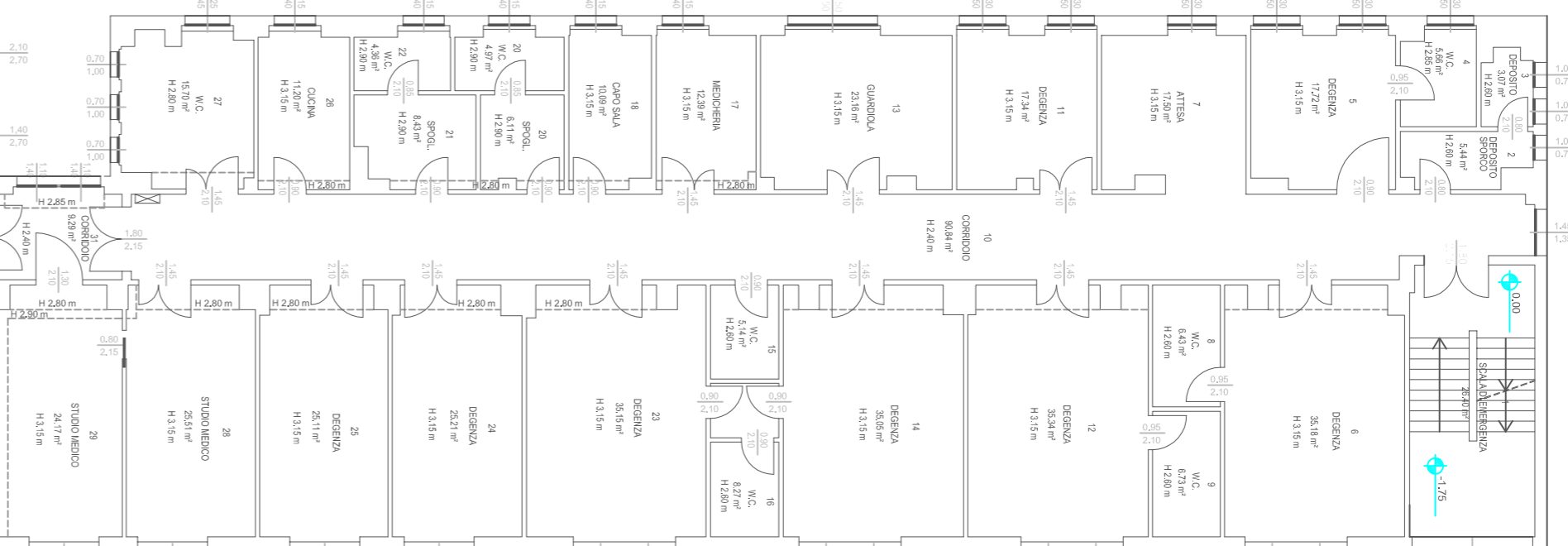


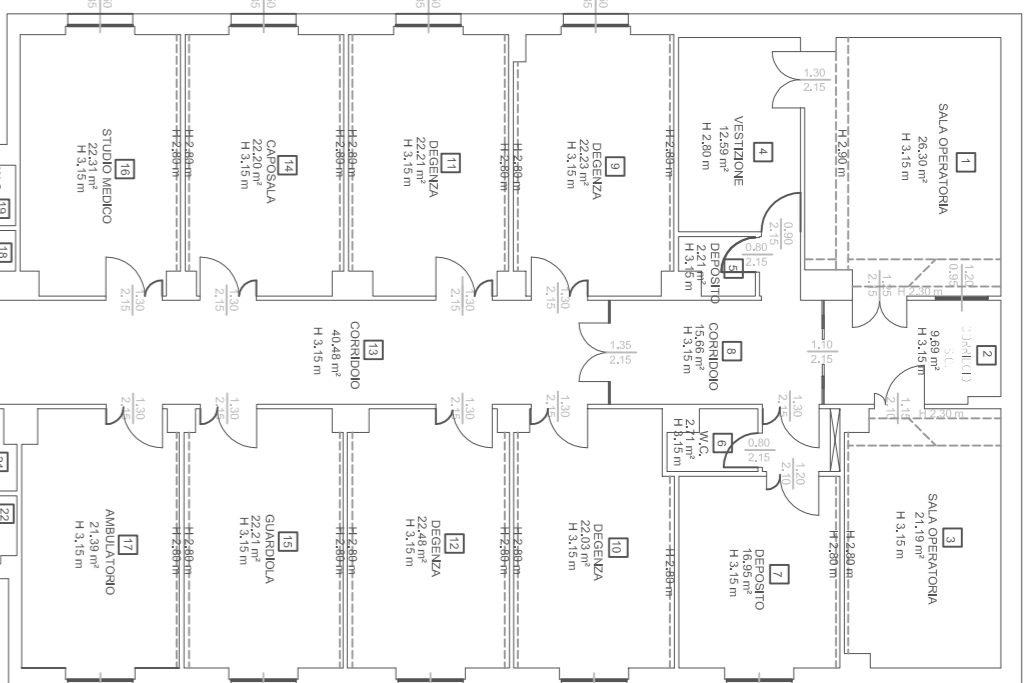
LUNGODEGENZA



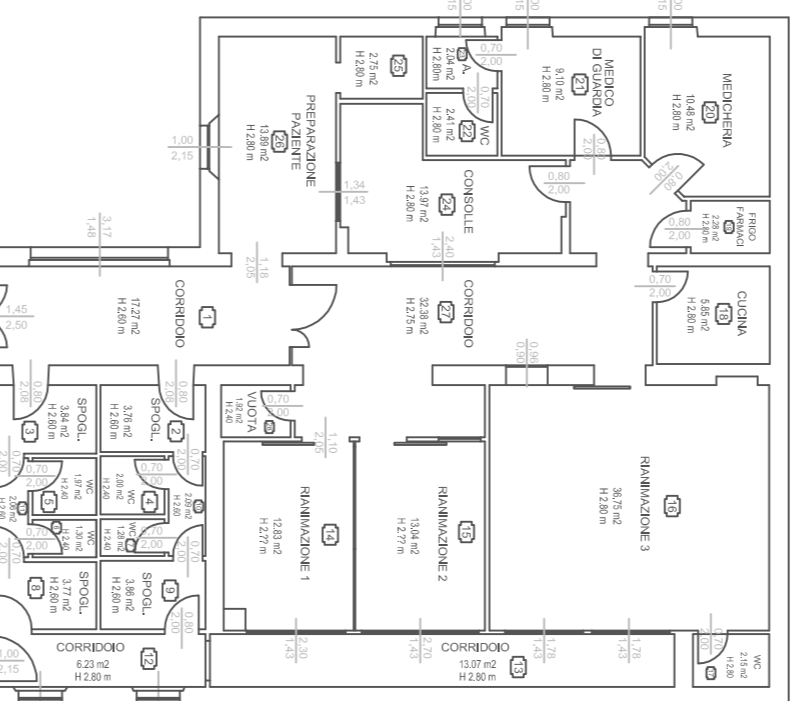
ORTOPEDIA



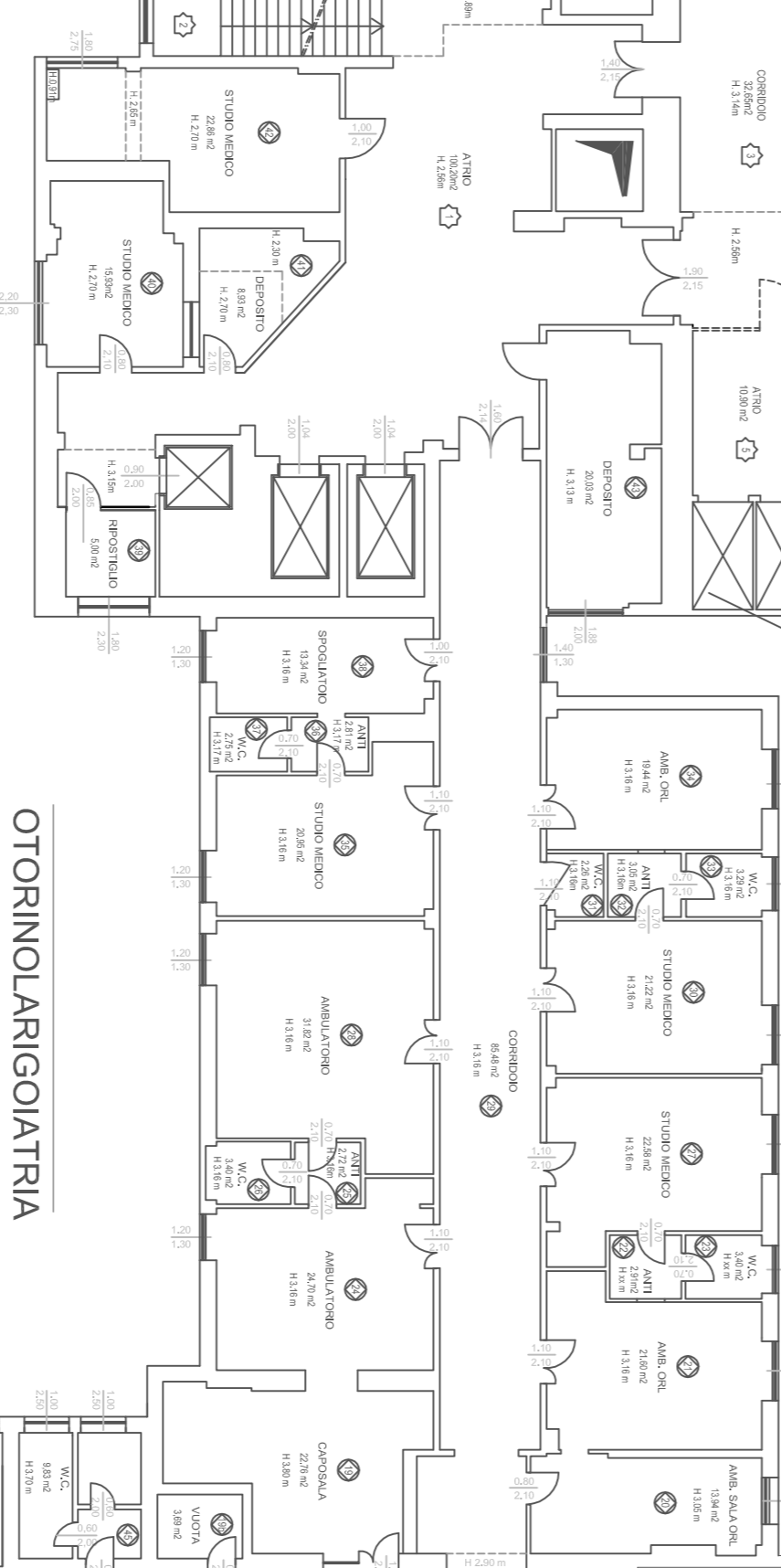
OCULISTICA



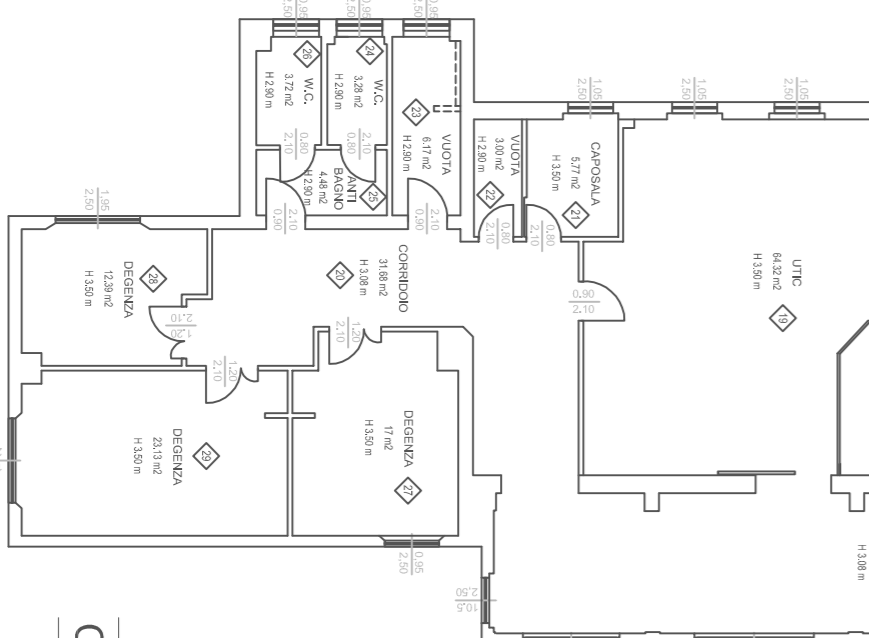
RIANIMAZIONE



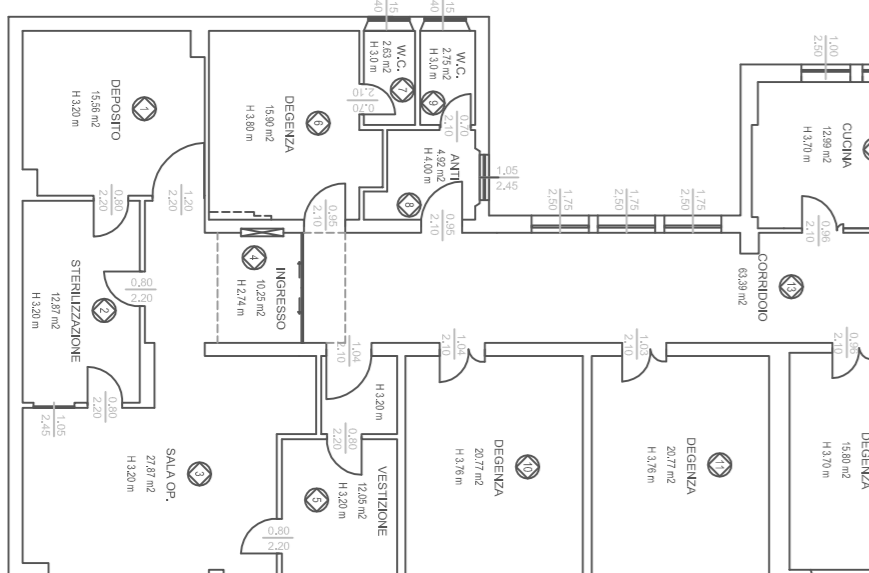
OTORINOLARINGOIATRIA



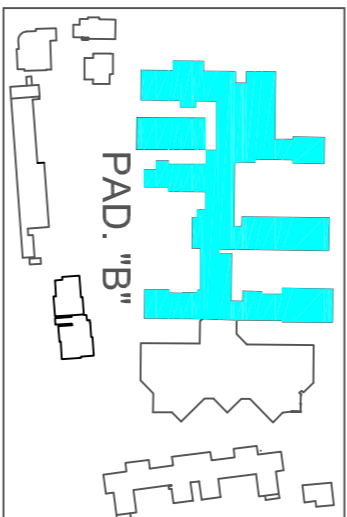
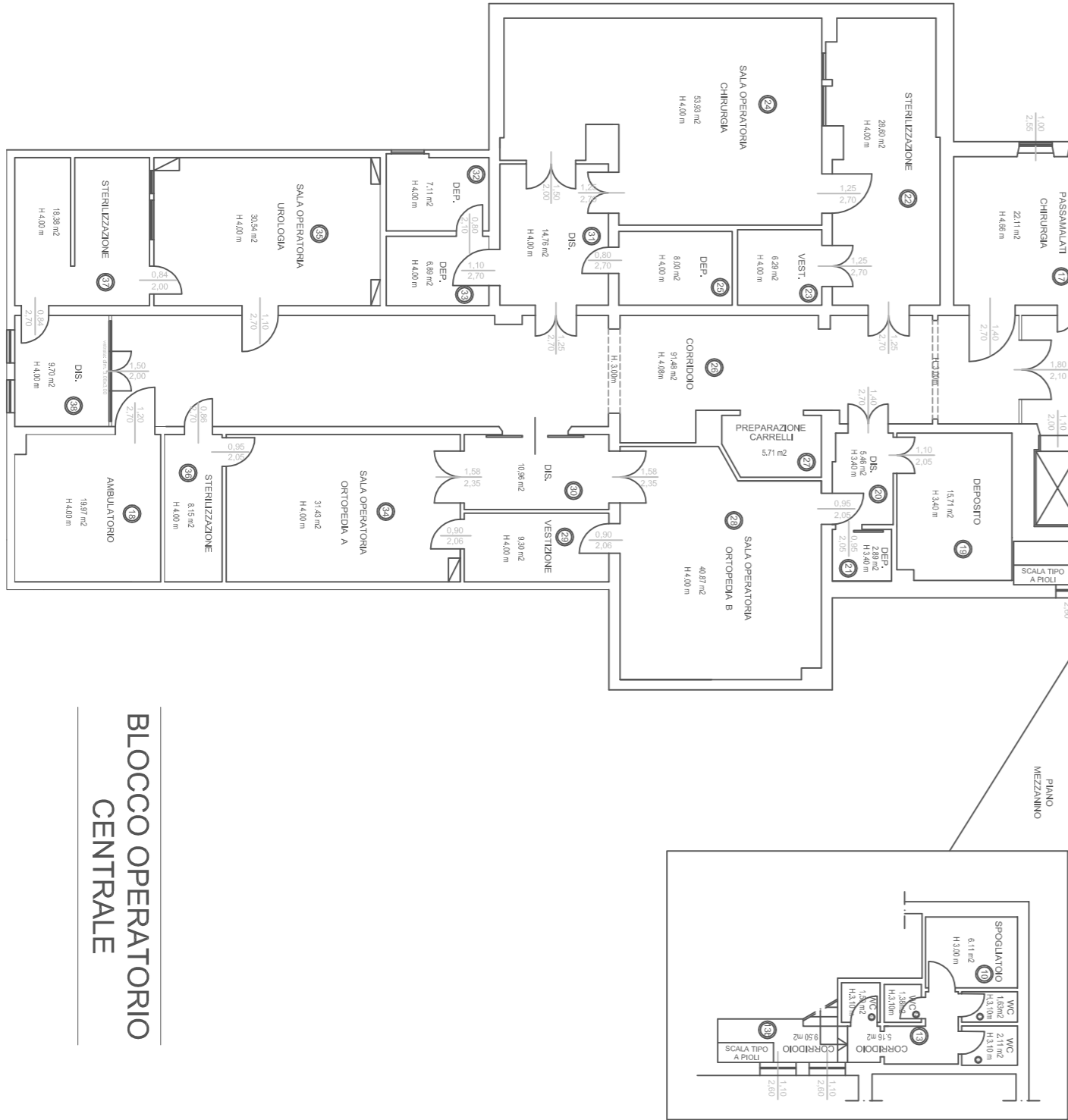
CARDIOLOGIA - U.T.I.C.



S.O. OTORINO



BLOCCO OPERATORIO CENTRALE



completamento

A.O.R.M.N. Azienda ospedaliera Ospedali Riuniti Marche Nord - Pesaro

direttore generale Dott. Aldo Ricci

responsabile del procedimento Ing. Giancarlo Conti

coordinatore tecnico-amministrativo Arch. Simone Rovattina

destinazione Presidio Ospedaliero di Fano via Vittorico Veneto - Fano (PU)

operatore Rilevi Planimetrici

Pad. B - piano Primo

scale 1 : 1 000

ott. 2011

professionista Taddai geom. Carmen Maria Diana

via Salaria 100, 00186 Roma

B3